

Line Strong 2Z Standard duty switches

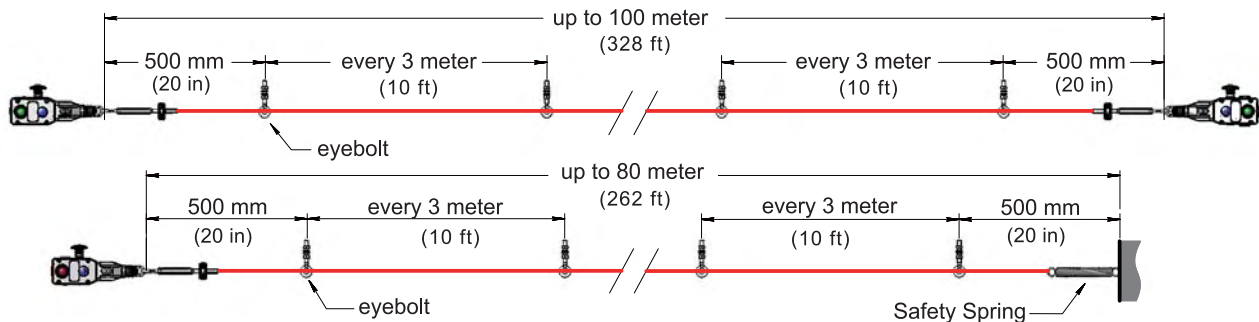
Protection up to 100 meters



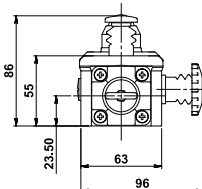
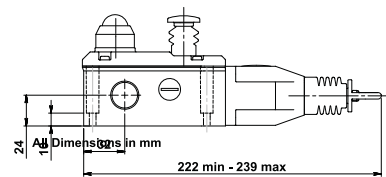
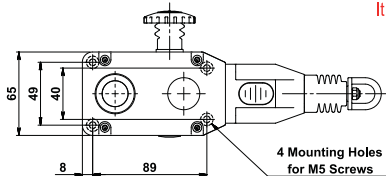
The Line Strong 2Z is a General Duty Safety Rope Pull switch designed to protect long conveyor lengths up to 100m. The Stainless Steel 316 housings are designed specifically to withstand the tough environments found in the Food and Pharmaceutical Industries. The fixing holes are under the cover of the switch to prevent food trap areas. They are all purpose switches and will survive chemical and detergent wash-down by providing all stainless steel parts and robust IP67 and IP69K sealing by using integral bellows and gaskets.

An easily seen bi-color LED is available to show switch status from a distance and they have 4 pole contact blocks to ensure flexibility with all modern control applications. Shorter rope spans up to 80m can be achieved by using just one switch therefore making a cost effective solution and also reducing electrical wiring runs.

Stainless Steel



It is recommended when using a Safety Spring that a maximum of one corner pulley is used.



Line Strong 2Z

2TLA050202R0020	LineStrong2Z, 2NC/2NO, M20, SS
2TLA050202R1020	LineStrong2Z, 2NC/2NO, NPT, SS
2TLA050202R0222	LineStrong2Z, 2NC/2NO, M20 LED, SS 24VDC
2TLA050202R1222	LineStrong2Z, 2NC/2NO, NPT LED, SS 24VDC
2TLA050202R0223	LineStrong2Z, 2NC/2NO, M20 LED, SS 110VAC
2TLA050202R1223	LineStrong2Z, 2NC/2NO, NPT LED, SS 110VAC
2TLA050202R0224	LineStrong2Z, 2NC/2NO, M20 LED, SS 230VAC
2TLA050202R1224	LineStrong2Z, 2NC/2NO, NPT LED, SS 230VAC
2TLA050202R0120	LineStrong2Z, 2NC/2NO, M20, ESTOP, SS
2TLA050202R1120	LineStrong2Z, 2NC/2NO, NPT ESTOP, SS
2TLA050202R0322	LineStrong2Z, 2NC/2NO, M20 ESTOP/LED, SS 24VDC
2TLA050202R1322	LineStrong2Z, 2NC/2NO, NPT ESTOP/LED, SS 24VDC
2TLA050202R0323	LineStrong2Z, 2NC/2NO, M20 ESTOP/LED, SS 110VAC
2TLA050202R1323	LineStrong2Z, 2NC/2NO, NPT ESTOP/LED, SS 110VAC
2TLA050202R0324	LineStrong2Z, 2NC/2NO, M20 ESTOP/LED, SS 230VAC
2TLA050202R1324	LineStrong2Z, 2NC/2NO, NPT ESTOP/LED, SS 230VAC

Standards:	IEC 947-5-1	IEC947-5-5	EN954-1	EN62061
	UL508	ISO13850	ISO13849-1	
Safety Classification and Reliability Data:				
Mechanical Reliability B10d	1.5 x 10 ⁶ operations at 100mA load			
EN 954-1	up to Category 4 with Safety Relay			
ISO 13849-1	up to PLe depending upon system architecture			
EN 62061	up to SIL3 depending upon system architecture			
Safety Data - Annual Usage	8 cycles per hour / 24 hours per day / 365 days			
PfHd	<1.0 x 10 ⁻⁷			
Proof Test Interval (Life)	21 years			
MTTFd	214 years			
Enclosure / Cover	Stainless Steel 316			
External Parts	Stainless Steel			
IP Rating	IP69K (NEMA PW12)		IP67 (NEMA 6)	
Rope Spans	100m			
Rope Tension device	Tensioner / Gripper - Quick Fixing			
Rope Type:	4.0 mm Outside Dia. Steel inner - PVC sheath			
Mounting	4 x M5			
Mounting position	Any			
Conduit entries	3 x M20 or 3 x 1/2" NPT		by part number	
Torque settings	Mounting M5 4.0 Nm Lid T20 Torx M4 1.5 Nm Terminals 1.0 Nm			
Ambient Temperature	-25C +80 C. (100C. Cleaning)			
Vibration resistance	10-500Hz 0.35mm			
Shock resistance	15g 11ms			
Tension Force (typical mid setting)	130N.			
Typical Operating Force (Rope pulled)	< 125N.		< 300mm Deflection	
Weight	1750 g.			
Contact type	IEC 947-5-1 Double break Type Zb Snap Action up to 4NC (positive break) 2NO (Auxiliary)			
Contact Material	Silver			
Termination	Clamp up to 2.5 sq. mm conductors			
Rating	Utilisation Category : AC15 A300			
Operational Rating	240V. 3A.			
Thermal Current (Ith)	10A.			
Rated Insulation Voltage (Ui)	500V.			
Withstand Voltage (Uimp)	2500V.			
Short Circuit Overload Protection	Fuse Externally 10A. (FF)			

For all ABB Jokab Safety Rope Switches, the normally closed (NC) circuits are closed when the system is tensioned correctly and the switch has been reset.